

**Client: Sequence 22**

 Sample received: **03/27/26**  
 Analysis conducted: **04/02/26**

<b>Compound:</b>	Retatrutide	<b>CAS:</b>	2381089-83-2
<b>Batch/Lot #:</b>	S22-RET-0418-01	<b>Formula:</b>	C221H342N46O68
<b>Appearance:</b>	White lyophilized powder	<b>Mol Wt:</b>	4845.444 g/mol

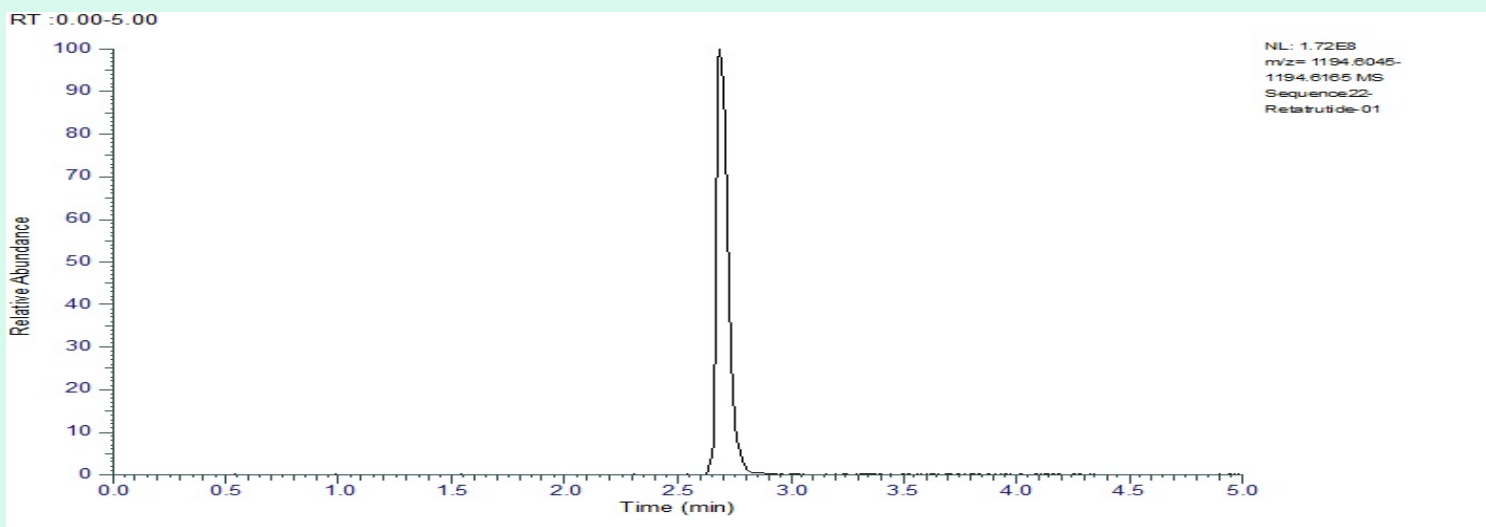
**Method:** Qualitative and Quantitative chemical analysis by Ultra High Performance Liquid Chromatography with Mass Spectrometry

**Pubchem CID:** 171390338

Retatrutide | C221H342N46O68 | Pubchem CID 171390338

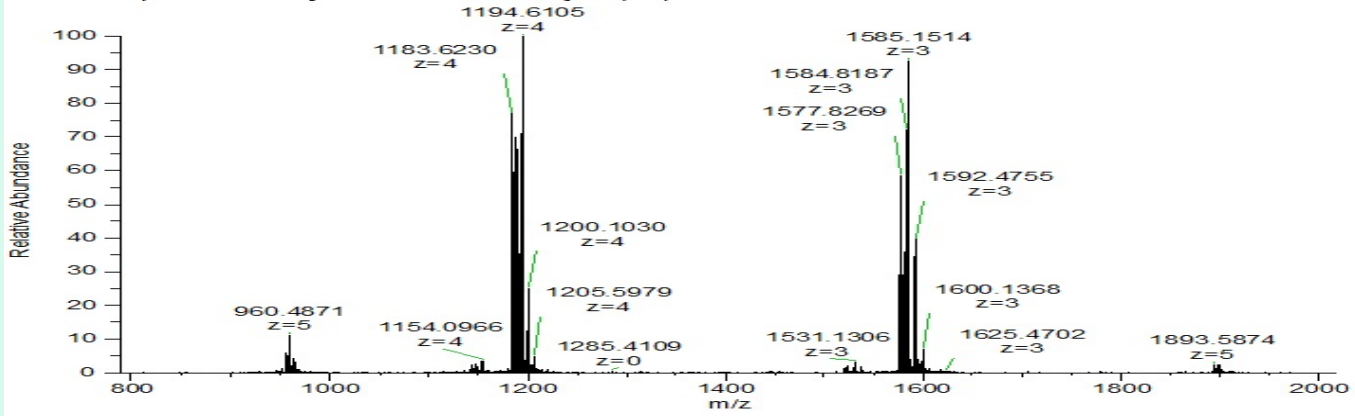
	Specification	Result	
<b>Identity Test:</b>	Retatrutide	<b>Retatrutide</b>	<b>Conforms</b>
<b>Purity:</b>	>99%	<b>99.29%</b>	<b>Conforms</b>

### LC-MS Chromatogram: Retention Time and Peak Analysis



### Full Scan Mass Spectrometry Analysis

Sequence22-Retatrutide-01 #308 RT: 2.68 AV: 1 NL: 1.66E8  
T: FTMS + p ESI Full ms [800.0000-2000.0000] IIT (ms): 0.4880



**Analysis Performed by**

Dr. Roberto Marin  
Analytical Chemist  
contact@bioregen.com

COA #12693  
Security Key **22SEQUENCE**  
bioregen.com/verify



*Roberto Marin*